



TRI TOOL INC.

3806 Security Park Drive, Rancho Cordova, CA 95742-6990 USA • (916) 351-0144 • (888) TRI TOOL • FAX (916) 351-0372
www.tritool.com customer.service@tritool.com

TRI TOOL INC.
TECHNICAL SPECIFICATION
MODEL HPU 75-60/5
SEPTEMBER 6, 2002

MODEL HPU 75-60/5

The Model HPU 75-60/5 Hydraulic Power Supply is a dual pump power supply (60 GPM and 5 GPM) pressure compensated piston pump. This power unit is designed for supplying hydraulic power to cutting and end preparation pipe lathes with integral hydraulic motors. The 5 GPM pump operating at 2000 PSI provides power to the feed and the clamping system of the PFM. A low voltage (24 volt) pendant provides start/stop control. The pendant allows for operation up to 50 feet away from the power supply. For portability the power supply is integrated into a skid type frame.

Specifications

1. Primary Power
 - A. 75 HP, 3-phase, 460 VAC, 50/60 Hz motor.
 - i. Voltage may be changed. (Not recommended for field change.)
2. Electrical Control Features
 - A. Magnetic starter with 24 VAC starting coil and overload protection circuit breaker.
 - B. Start/Stop function is controlled with 24 VAC remote pendant.
3. Hydraulic Characteristics
 - A. Main Pump
 - i. 60 GPM at 2000 PSI
 - B. Secondary Pump
 - i. 5 GPM at 2000 PSI

- C. The hydraulic pumps have been selected to provide optimum pressure response to cutting loads generated by pipe lathes.
 - D. Loop filtration to prevent contamination from circulating through the pump.
 - E. Tank suction line filter.
4. Cooling
- A. Thermostatically controlled fan-operated heat exchanger in reservoir return line.
5. Hydraulic Reservoir
- A. Capacity
 - i. 140 gallons
 - ii. Includes a level gauge, temperature gauge and thermocouple wired to a thermostat.
6. Hydraulic Fluids Compatibility
- A. Petroleum base hydraulic fluids, Type F.
 - i. Hydraulic hoses must be purchased separately.
7. Primary Power Connection
- A. Customer is responsible for power connection and any disconnect switch required by local codes.

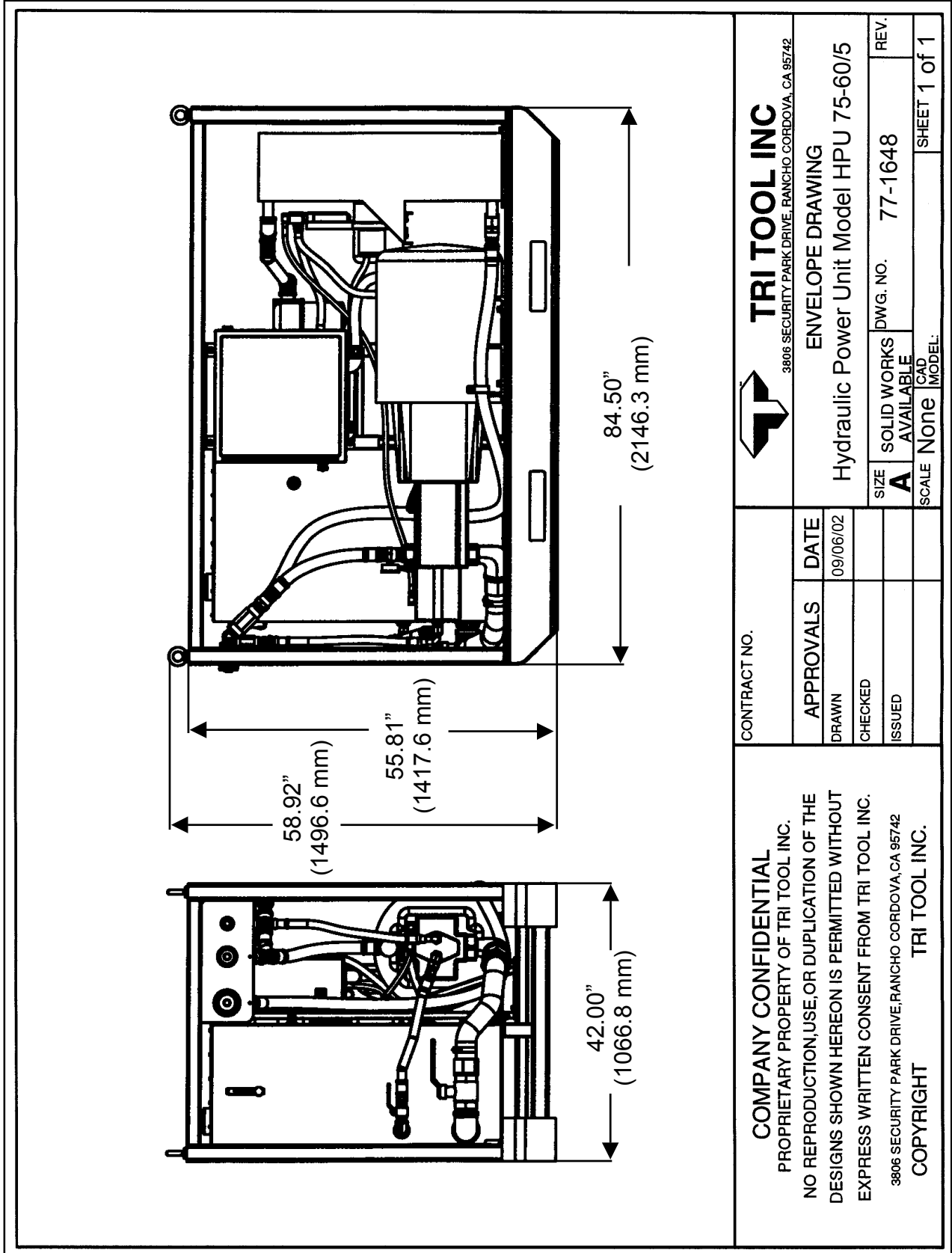
Note To The Customer

Spare Parts and Standard Tool Bits are available from stock. Engineering design services for custom tool bits and special function modifications are available from the factory.

All Tri Tool and allied equipment products are subject to design improvements and specification changes at any time with no obligation to units already sold.

Warranty (limited): Parts and equipment are warranted against defects in material and workmanship for a period of one (1) year from date of purchase. Full details supplied on request and/or with the tools.

Filter, regulator and lubricator are required to protect the warranty on air powered tools.



<p>COMPANY CONFIDENTIAL PROPRIETARY PROPERTY OF TRI TOOL INC. NO REPRODUCTION, USE, OR DUPLICATION OF THE DESIGNS SHOWN HEREON IS PERMITTED WITHOUT EXPRESS WRITTEN CONSENT FROM TRI TOOL INC. 3806 SECURITY PARK DRIVE, RANCHO CORDOVA, CA 95742 COPYRIGHT TRI TOOL INC.</p>		<p>CONTRACT NO.</p>		<p>TRI TOOL INC 3806 SECURITY PARK DRIVE, RANCHO CORDOVA, CA 95742</p>		
		<p>APPROVALS</p>	<p>DATE</p>	<p>ENVELOPE DRAWING</p>		<p>REV.</p>
		<p>DRAWN</p>	<p>09/06/02</p>	<p>Hydraulic Power Unit Model HPU 75-60/5</p>		<p>SIZE</p>
		<p>CHECKED</p>				<p>A</p>
		<p>ISSUED</p>				<p>SOLID WORKS</p>
						<p>AVAILABLE</p>
						<p>DWG. NO.</p>
						<p>77-1648</p>
						<p>SCALE</p>
						<p>None</p>
						<p>CAD MODEL</p>
						<p>SHEET 1 of 1</p>