



TRI TOOL INC.

3806 Security Park Drive, Rancho Cordova, CA 95742-6990 USA • (916) 351-0144 • (888) TRI TOOL • FAX (916) 351-0372
www.tritool.com customer.service@tritool.com

TRI TOOL INC.
TECHNICAL SPECIFICATION
MODEL 765RVC
JUNE 2007

MODEL 765RVC HYDRAULIC POWER SOURCE

The Model 765 Remote Volume Control Hydraulic Power Source is a variable-volume (0 GPM to 15 GPM), pressure-responsive (0 to 1800 PSI), reversible-flow power unit for supplying hydraulic power to cutting and weld end preparation pipe lathes with integral hydraulic motors. A low voltage (24 volts) pendant provides stop, start, volume control, and forward/neutral/reverse flow direction control. The pendant allows operation up to 200 feet away from the power supply by addition of an extension cable and 200-foot hydraulic hoses. For portability, the power supply is integrated into a cart frame with wheels and casters. The attached envelope drawing shows configuration and dimensions.

Specifications

1. Primary Power
 - A. 15HP, 3-phase, 460 VAC, 50/60 Hz motor. (Voltage may be changed to 240 or 380 VAC – Not recommended for field change; requires a circuit breaker change, phase monitor change, and wiring change.)
2. Electrical Control Features
 - A. Magnetic starter with 24 VAC starting coil and overload protection circuit breaker.
 - B. Phase sensor to prevent reverse rotation of motor, which can damage hydraulic pump.
 - C. The unit is controlled with a 24 VAC and 24 VDC remote pendant which provides stop/start functions, variable volume control, and a forward/neutral/reverse control. The flow direction control is detented in forward and neutral, and restricted to only supply 25% of forward flow in reverse. If the power supply has been shut-off with the stop button, the volume control must be returned to zero to restart the unit, which prevents instant pipe lathe rotations at start up. The Pendant is supplied with a 25-foot cable connected to the control box with a threaded ring connector for addition of extension up to 200 feet.

3. Hydraulic Characteristics

A. Variable Volume

- i. 0 to 15 GPM at 1800 PSI (operation below 3 GPM not recommended.)
- ii. 0 to 22 GPM at 1000 PSI

NOTE: Maximum flow capacity on 380 VAC, 3 phase power is 16GPM.

B. Volume Control-Pendant rheostat with integrated Electric Displacement Control (EDC) in pump.

C. Pressure

- i. 0 to 1800 PSI.
- ii. The hydraulic pump has been selected to provide optimum pressure response to cutting loads generated by pipe lathes.

D. Pilot – Operated By-Pass (Pressure Limiting) Valve

- i. Two (2) are included in the forward and reverse flow lines.

E. Closed-loop system for minimum heat generation.

F. 'Loop' filtration to prevent contamination from circulating through pump.

G. Tank suction line filter.

4. Cooling

A. Heat exchanger in reservoir return line.

5. Hydraulic Reservoir

A. Capacity

- i. 18 gallons (68 liters)
- ii. Includes level and temperature gauge.

6. Hydraulic Fluid Compatibility

A. Petroleum-base hydraulic fluids.

- B. Ethylene glycol/water based fluids. Contact the factory regarding specifics of Operation on the type fluid.

7. Hydraulic Hoses

- A. Must be purchased separately.

8. Primary Power Connection

- A. Customer responsible for power connection cord and any disconnect switches required by local codes.

9. Part Numbers

A. 01-0765

- i. Model 765RVC Basic Power Supply
 - a. A Voltage Change Kit is required.

B. Select 3-phase power Voltage Change Kit as required.

i. 05-0146

- a. 480 Volt Kit, 765RVC

ii. 05-0147

- a. 380/415 Volt Kit, 765RVC

iii. 05-0148

- a. 240/208 Volt Kit, 765RVC

C. 55-0043

- i. 50 foot hose kit.
- ii. Includes (1) ea. 50' pressure and (1) ea. 50' return hose.

D. 70-0297

- i. 50-foot pendant extension cable.

- E. 70-0298
 - i. 100-foot pendant extension cable.
- F. 75-0089
 - i. Filter, element (primary loop)
- G. 75-0007
 - i. Filter, cartridge (suction)

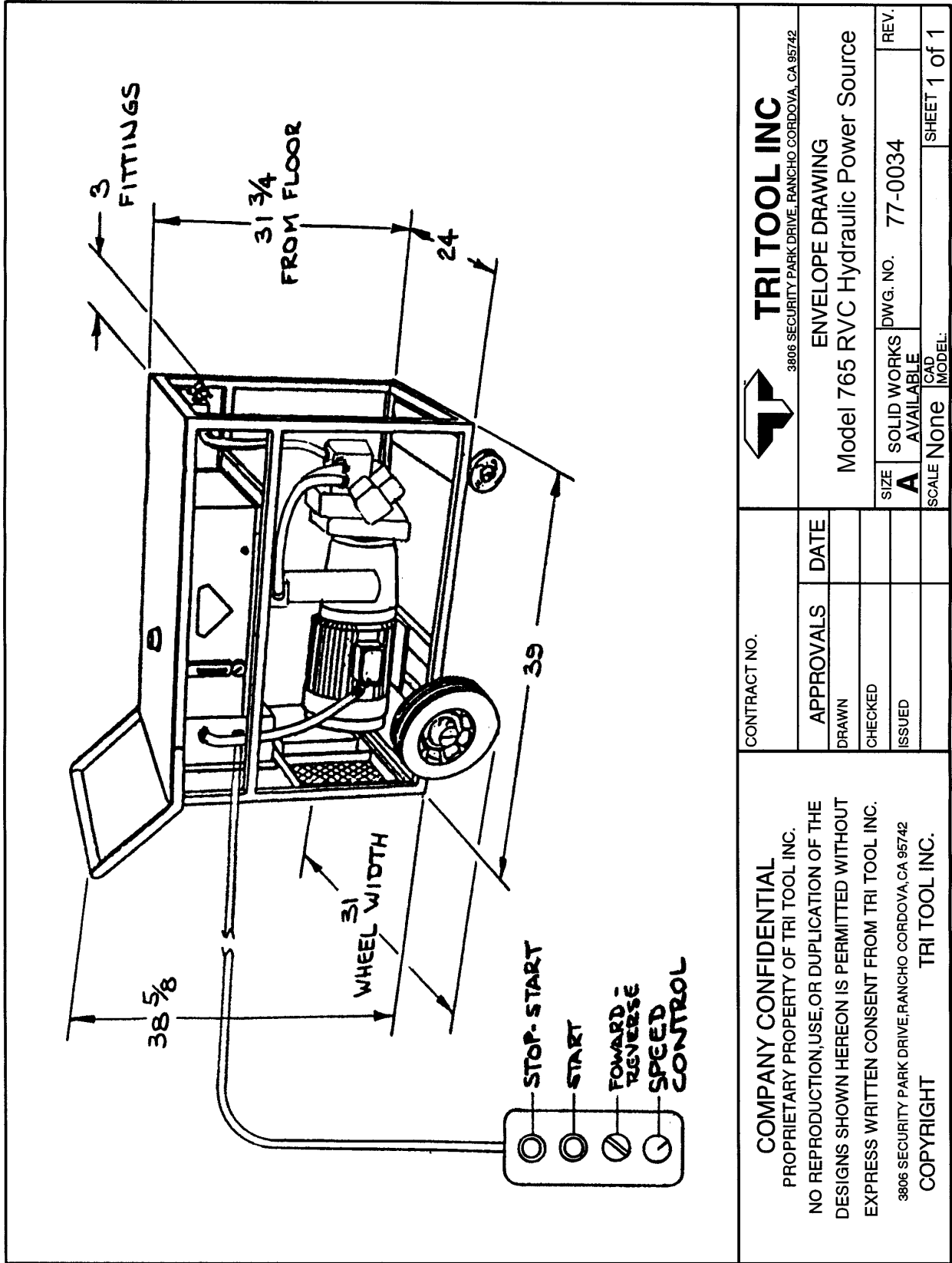
Note To The Customer

Spare Parts and Standard Tool Bits are available from stock. Engineering design services for custom tool bits and special function modifications are available from the factory.

All Tri Tool and allied equipment products are subject to design improvements and specification changes at any time with no obligation to units already sold.

Warranty (limited): Parts and equipment are warranted against defects in material and workmanship for a period of one (1) year from date of purchase. Full details supplied on request and/or with the tools.

Filter, regulator and lubricator are required to protect the warranty on air powered tools.



<p>TRI TOOL INC 3806 SECURITY PARK DRIVE, RANCHO CORDOVA, CA 95742</p>		<p>ENVELOPE DRAWING</p>		REV.	
		<p>Model 765 RVC Hydraulic Power Source</p>		REV.	
CONTRACT NO.	APPROVALS	DATE	SIZE	DWG. NO.	REV.
	DRAWN		A	77-0034	
	CHECKED		AVAILABLE		
	ISSUED		SCALE		
			None		
			CAD MODEL:		SHEET 1 of 1

COMPANY CONFIDENTIAL
 PROPRIETARY PROPERTY OF TRI TOOL INC.
 NO REPRODUCTION, USE, OR DUPLICATION OF THE
 DESIGNS SHOWN HEREON IS PERMITTED WITHOUT
 EXPRESS WRITTEN CONSENT FROM TRI TOOL INC.
 3806 SECURITY PARK DRIVE, RANCHO CORDOVA, CA 95742
 COPYRIGHT TRI TOOL INC.