



TRI TOOL INC.

3806 Security Park Drive, Rancho Cordova, CA 95742-6990 USA • (916) 351-0144 • (888) TRI TOOL • FAX (916) 351-0372
www.tritool.com customer.service@tritool.com

TRI TOOL INC.
TECHNICAL SPECIFICATION
MODEL 638RBL LOW PROFILE CLAMSHELL
OCTOBER 2006

Model 638RBL Low Profile Clamshell

The 638RBL Low Profile Clamshell is a split-frame pipe lathe for severing and/or beveling in-line pipe with a range of 32" through 38" nominal diameter with minimal radial and axial clearances.

Design and Operating Features

1. Easily adjustable precision 90° -Vee bearings preload and stabilize the rotating head to provide long life, low maintenance, stability and precision.
2. The clamshell splits into two halves for mounting on closed looped systems. All parts are secured to the two halves to avoid loss of parts and provide maximum ease of handling.
3. The clamshell is equipped with jackscrews and mounting adjustable pads for out-of-round pipe conditions.
4. Dual tool modules with auto-feed star wheels and adjustable slide ways provide maximum maintainability, life and operator safety with minimum operator training.
5. The gear reduction, auto-feed star wheels provide .0025" (.06mm) of radial feed per revolution for a controlled depth of cut.
6. Drive gears and bearing surfaces are covered for operator safety and sealed to prevent cutting chip damage.
7. Operator controls are away from the rotating head for operator safety.
8. Modular design concepts provide quick, easy maintenance and maximum versatility in drive and tooling options.
9. The clamshell has 90° -Vee bearings that are field adjustable back to zero tolerance.

Specifications

1. Reference Envelope Drawing No. 77-1688 (Air) and 77-1689 (Hyd.).
2. Cutting Capacities (with Standard Tool Module)
 - A. Basic Pipe Size
 - i. 32" through 38"
 - B. Severing
 - i. Severing with standard procedures
 - a. 2.50" (63.5mm) wall
 - ii. Severing and single beveling
 - a. 1.00" (25.4mm) wall
 - iii. Severing and double beveling
 - a. 1.00" (25.4mm) wall
 - iv. Severing and beveling w/special procedures
 - a. 2.00" (50.8mm) wall
3. Material Cutting Capabilities
 - A. Materials include, but are not limited to:
 - i. Carbon steel, low alloy steel, chrome steel (20% max.), chrome/molly alloys (Rc 32 max.), austenitic stainless steel, inconel, copper, aluminum and copper nickel alloys.
4. Clearance and Dimensions
 - A. See Envelope Drawings.
5. Drive Options
 - A. Single or dual right angle air motors
 - i. Single air requirements @ 90 PSI (6.3 kg/cm²)/80 CFM (38 lt/sec)

- ii. Head Speed @ maximum horsepower
 - a. 3 RPM
- B. Single or dual inline hydraulic motors
 - i. Requires separate hydraulic power supply. Ref: 765RVC technical specifications.
- 6. Tool Modules
 - A. Working diameter range
 - i. 32" - 38 " pipe
- 7. Feed Rate
 - A. .0025" (.06 mm)/rev.
- 8. Mounting
 - A. Four (4) fully adjustable mounting pads with additional mounting jackscrews for 32", 34", 36", and 38" pipe.
- 9. Weight
 - A. Basic machine with Two (2) drive housings
 - i. 265 lbs. (120.0 kg)
 - B. Standard Tool Modules
 - i. 18 lbs. (8.2kg)/module
 - C. Hydraulic Motors
 - i. 34 lbs. (15.4 kg) ea.
 - D. Air Motors
 - i. 19 lbs. (8.6 kg) ea.

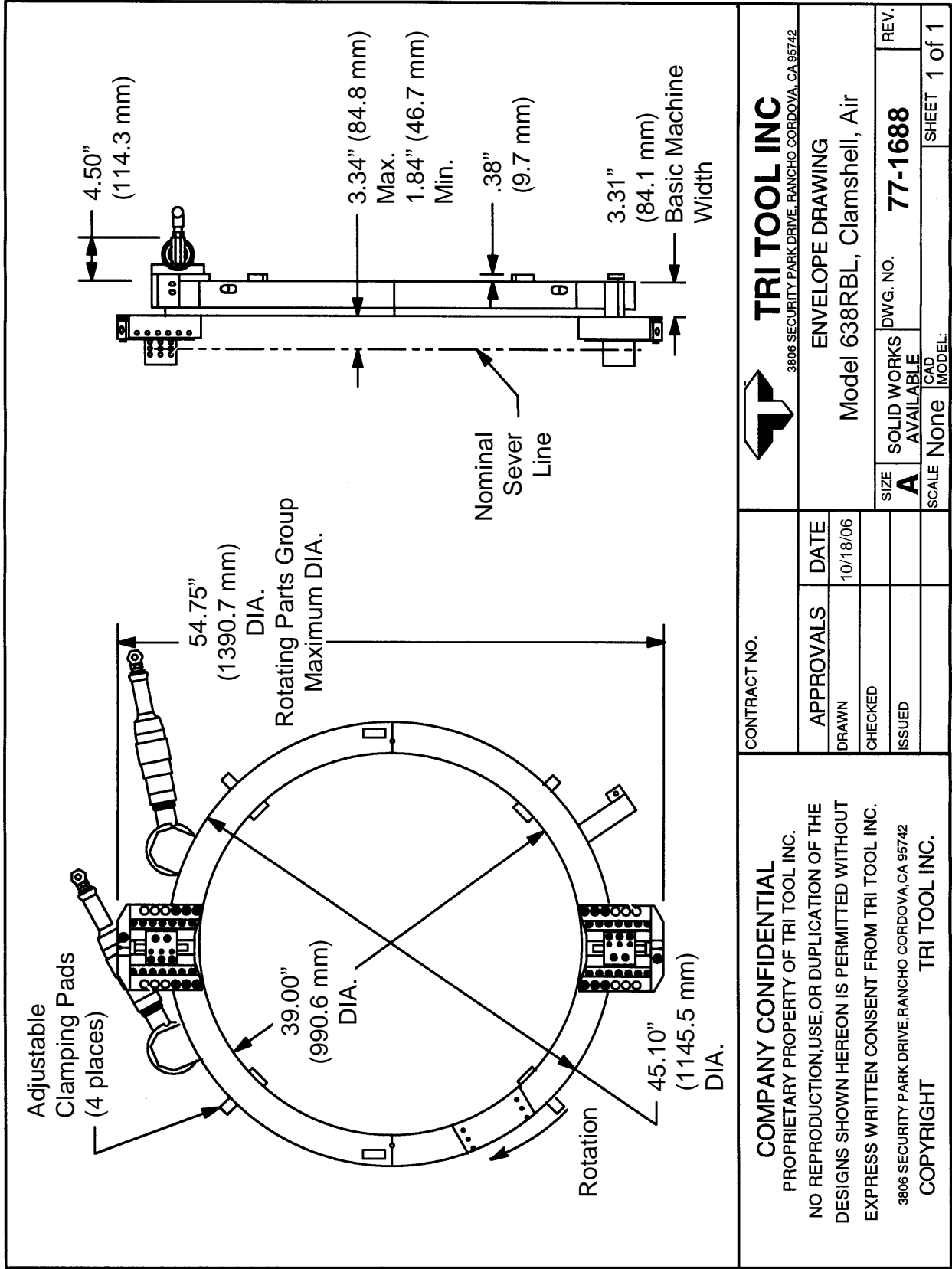
Note To The Customer


Spare Parts and Standard Tool Bits are available from stock. Engineering design services for custom tool bits and special function modifications are available from the factory.

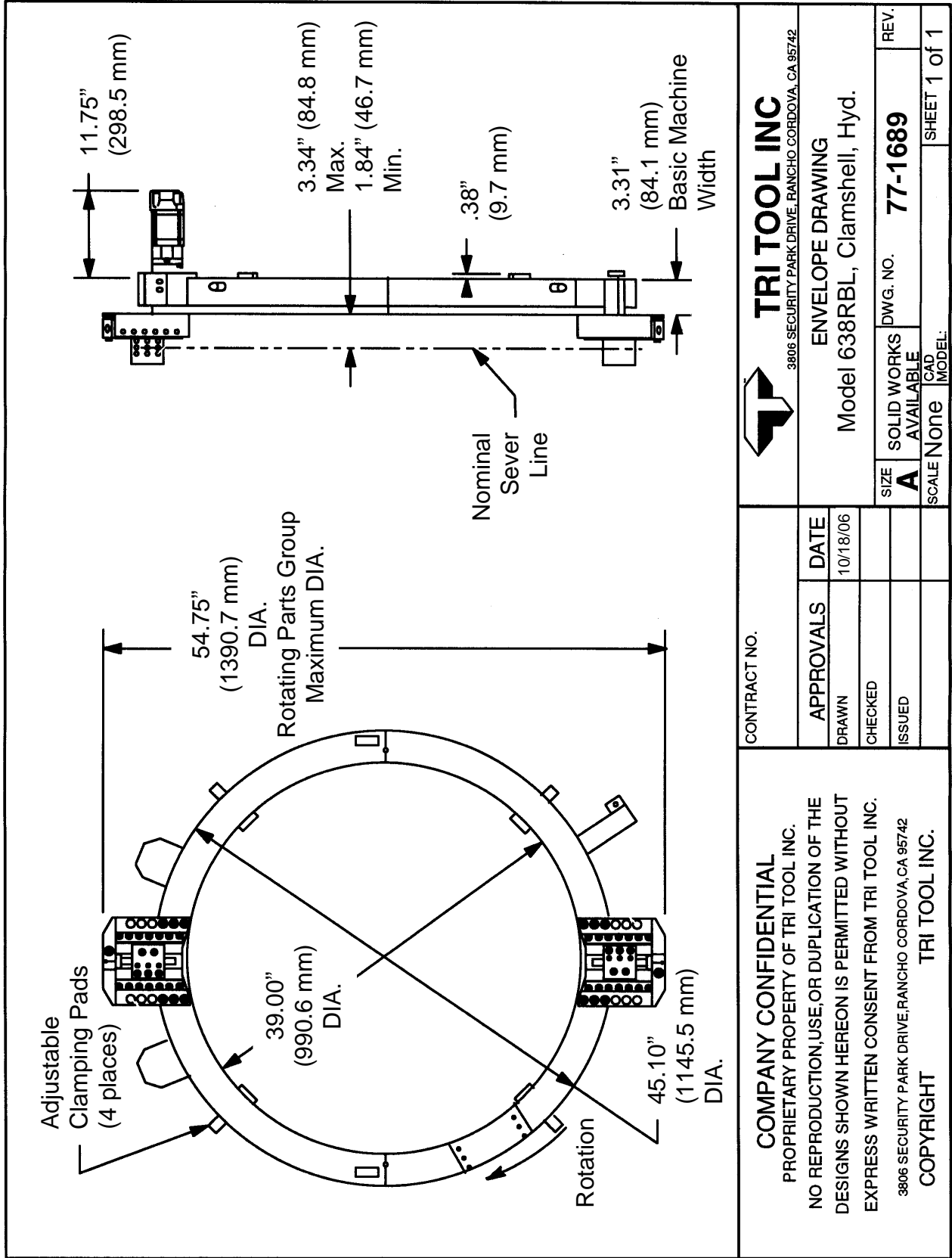
All Tri Tool Inc. and allied equipment products are subject to design improvements and specification changes at any time with no obligation to units already sold.


Warranty (limited): Parts and equipment are warranted against defects in material and workmanship for a period of one (1) year from date of purchase. Full details supplied on request and/or with the tools.

Filter, regulator and lubricator are required to protect the warranty on air powered tools.



 TRI TOOL INC <small>3806 SECURITY PARK DRIVE, RANCHO CORDOVA, CA 95742</small>		ENVELOPE DRAWING Model 638RBL, Clamshell, Air		DWG. NO. 77-1688	REV.
		SIZE A	SOLID WORKS AVAILABLE	SCALE None	CAD MODEL:
CONTRACT NO.		APPROVALS	DATE	REV.	
COMPANY CONFIDENTIAL PROPRIETARY PROPERTY OF TRI TOOL INC. NO REPRODUCTION, USE, OR DUPLICATION OF THE DESIGNS SHOWN HEREON IS PERMITTED WITHOUT EXPRESS WRITTEN CONSENT FROM TRI TOOL INC. <small>3806 SECURITY PARK DRIVE, RANCHO CORDOVA, CA 95742</small> COPYRIGHT TRI TOOL INC.		DRAWN	10/18/06	REV.	
		CHECKED		REV.	
		ISSUED		REV.	



 TRI TOOL INC <small>3806 SECURITY PARK DRIVE, RANCHO CORDOVA, CA 95742</small>		ENVELOPE DRAWING		REV.
		Model 638RBL, Clamshell, Hyd.		DWG. NO. 77-1689
CONTRACT NO.	APPROVALS	DATE	SIZE	SCALE
	DRAWN	10/18/06	A	SOLID WORKS DWG. NO.
	CHECKED		AVAILABLE	77-1689
	ISSUED		CAD MODEL	SHEET 1 of 1
<p>COMPANY CONFIDENTIAL PROPRIETARY PROPERTY OF TRI TOOL INC. NO REPRODUCTION, USE, OR DUPLICATION OF THE DESIGNS SHOWN HEREON IS PERMITTED WITHOUT EXPRESS WRITTEN CONSENT FROM TRI TOOL INC. <small>3806 SECURITY PARK DRIVE, RANCHO CORDOVA, CA 95742</small> COPYRIGHT TRI TOOL INC.</p>				