



# TRI TOOL INC.

3041 Sunrise Blvd., Rancho Cordova, CA 95742-6502 • (888)TRI TOOL • (916)288-6100 • Fax (916)288-6160  
www.tritool.com • customer.service@tritool.com

TRI TOOL INC.  
TECHNICAL SPECIFICATION  
MODEL 236B SINGLE POINT  
FEBRUARY 2008

## Model 236B Single Point

The Model 236B Single Point is supplied as a kit with modular components assembled onto the face of the 236B BEVELMASTER™. The 236B then mounts on the flange or pipe I.D. When used in conjunction with the 236B Miter Mandrel, the 236B Single Point/Flange Facer Kit miters to align to the flange face.

The Model 236B Single Point Kit comes complete with:

- Feed Gear Housing Assembly 1 ea.
- Adapter Plate Assembly 1 ea.
- Insert, Cutting 1 ea.
- Feed Gear 1 ea.
- Tool Holder 1 ea.
- Cutter Assembly 1 ea.
- Mandrel Seal 1 ea.
- All required operator's wrenches and mounting hardware 1 kit
- Operator's manual 1 ea.

## Design and Operating Features

1. Easy to assemble kit bolts directly to the face of the 236B without any modification to the machine.
2. 5" (127 mm) of feed length for heavy wall pipe and flange faces.
3. Slide Assembly has infinitely variable bevel angle adjustment between 0 and 37 1/2°.
4. 26.30" (668.0 mm) of total radial travel and adjustment for large pipe and flange cutting ranges.
5. Eight (8) different feed rate settings between .006" (.15 mm) and .042" (1.07 mm) per revolution inclusive for a variety of cutting and grooving applications.

## Specifications

1. Reference Envelope Drawing No. 77-1691
2. Beveling Angles
  - A. 0 to 37 1/2° graduated bevel angle adjustment.
3. Range, Beveling
  - A. 15.00" (381.0 mm) DIA to 60.00" (1524.0 mm) DIA cutting range at 37 1/2°.
4. Range, Flange Facing
  - A. 20.00" (508.0 mm) DIA to 68.00" (1727.2 mm) DIA cutting range.
5. Feed Travel
  - A. 5.0" (127.0 mm) nominal (radial)
6. Alignment
  - A. When used in conjunction with the 236B Miter Head Mandrel:
    - i. Angular           ± 5°
    - ii. Off set           ± .19" (4.83 mm)
7. Feed
  - A. Eight (8) selectable positions between .006" (.15 mm)/rev. and .042" (1.07 mm)/rev. inclusive.
8. Cutting
  - A. .200 max. cut depth/pass.
  - B. 63 RMS finish may be obtained depending on material.
  - C. Spiral grooves as coarse as 31 grooves per inch when grooving.
  - D. Machines stainless and carbon.

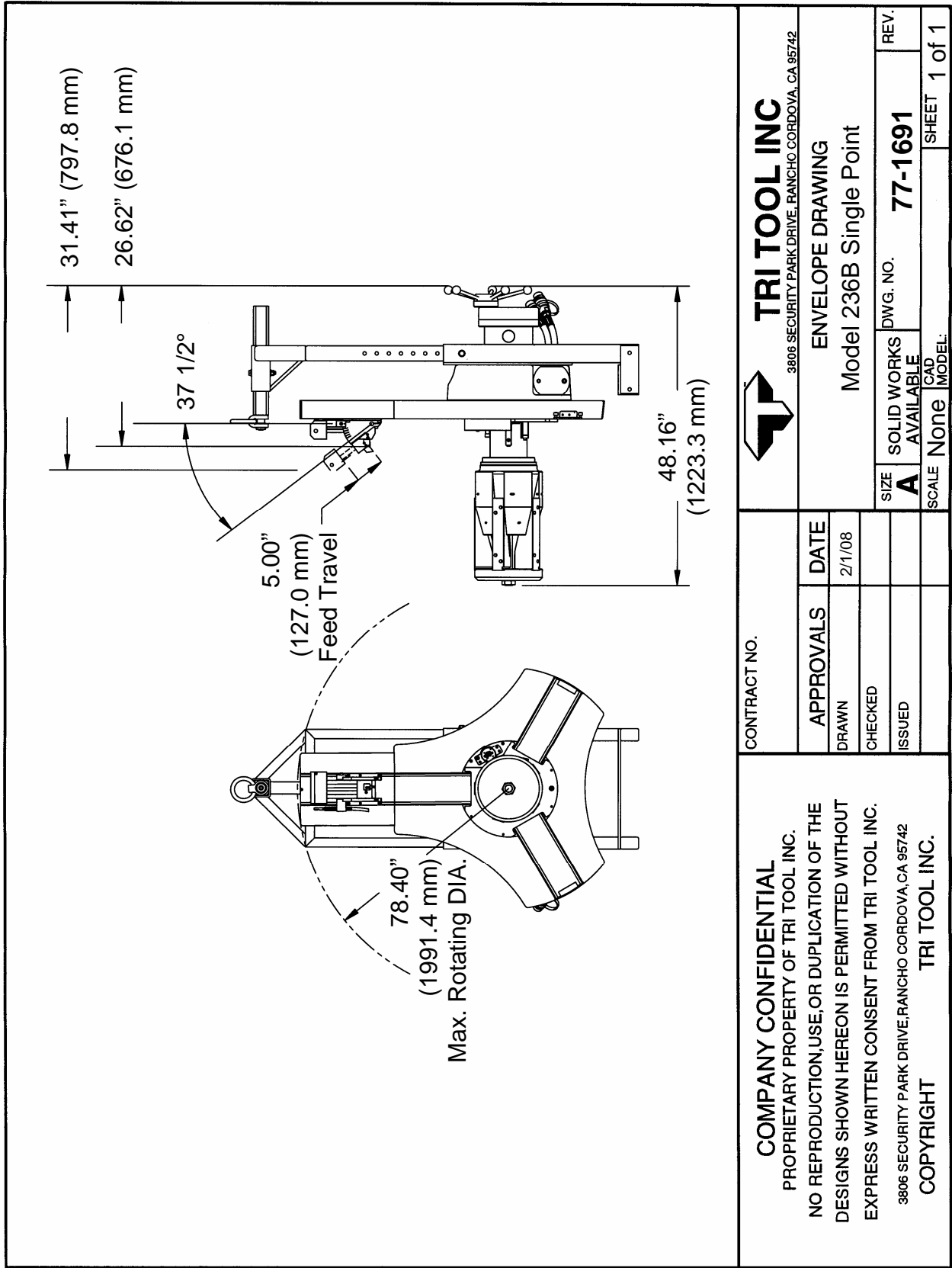
Note To The Customer


Spare Parts and Standard Tool Bits are available from stock. Engineering design services for custom tool bits and special function modifications are available from the factory.

All Tri Tool Inc. and allied equipment products are subject to design improvements and specification changes at any time with no obligation to units already sold.

Warranty (limited): Parts and equipment are warranted against defects in material and workmanship for a period of one (1) year from date of purchase. Full details supplied on request and/or with the tools.

Filter, regulator and lubricator are required to protect the warranty on air powered tools.



 <b>TRI TOOL INC</b> <small>3806 SECURITY PARK DRIVE, RANCHO CORDOVA, CA 95742</small>		<b>ENVELOPE DRAWING</b> Model 236B Single Point		REV.
		SIZE <b>A</b>	SOLID WORKS DWG. NO. <b>77-1691</b>	REV.
CONTRACT NO.		SCALE <b>None</b>	CAD MODEL:	SHEET <b>1</b> of <b>1</b>
<b>COMPANY CONFIDENTIAL</b> PROPRIETARY PROPERTY OF TRI TOOL INC. NO REPRODUCTION, USE, OR DUPLICATION OF THE DESIGNS SHOWN HEREON IS PERMITTED WITHOUT EXPRESS WRITTEN CONSENT FROM TRI TOOL INC. <small>3806 SECURITY PARK DRIVE, RANCHO CORDOVA, CA 95742</small> <b>COPYRIGHT TRI TOOL INC.</b>		APPROVALS	DATE	
		DRAWN	2/1/08	
		CHECKED		
		ISSUED		