



TRI TOOL INC.

TRI TOOL INTERNATIONAL INC.

3806 Security Park Drive., Rancho Cordova, CA 95742-6990 U.S.A. 916-351-0144 800-345-5015 FAX 916-351-0372 ttcustserv@aol.com www.tritool.com

TRI TOOL INC.
TECHNICAL SPECIFICATION
MODEL 224B MITER MANDREL KIT
July, 1999

Model 224B Miter Mandrel Kit

The Model 224B Miter Mandrel is an accessory which is used to expand the versatility of the Model 224B by allowing in-situ setup on irregular pipe fittings, elbows and valves. Once secured to the inside of the workpiece, angular and radial misalignment of 5° and 0.19" (4.8mm) respectively, may be corrected. The angular and radial adjustments, also, may be utilized to set up miter angles or compensate for the misalignment of elbow prep to inside mounting surface.

The Model 224B Miter Mandrel Kit comes complete with:

- A. Miter Mandrel Head Assembly
- B. Jackscrew Sets
- C. Jackscrew Spacer Sets
- D. Indicator Sleeve Assembly
- E. Dial Indicator Kit
- F. Carrying case
- G. Operator's Manual
- H. All required operator's wrenches

Design and Operating Features:

1. The miter mandrel head is set up and all adjustments made prior to mounting the Model 224B.
2. The kit includes a dial indicator and rotating sleeve assembly for fast, precision setup.
3. The two rows of jackscrews, axially separated by 1.83" (46.5mm), provide secure mounting on most surfaces.
4. All radial and angular adjustments are mechanically actuated.

Specifications:

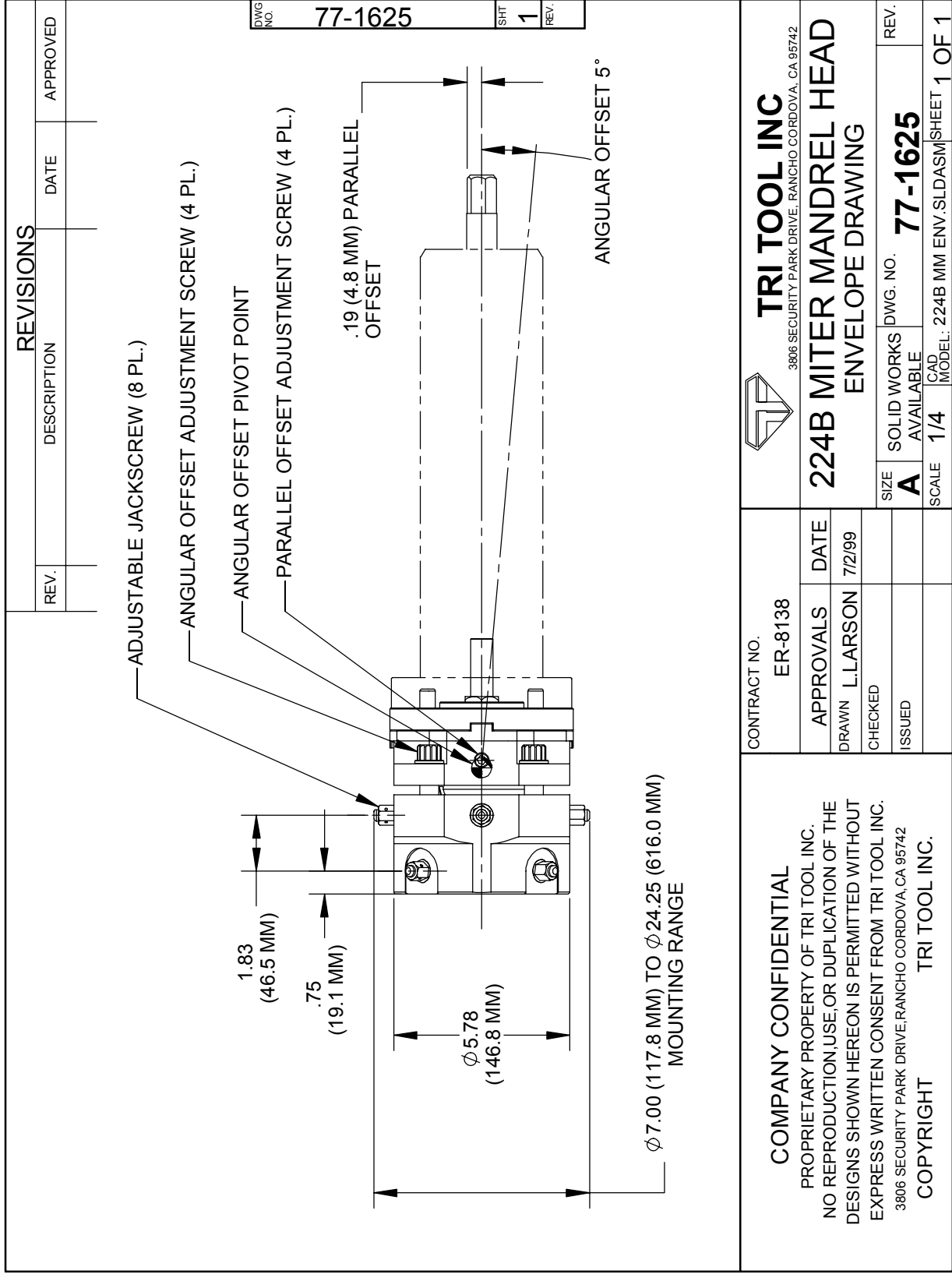
1. Reference Envelope drawing No. 77-1625
2. Pipe Holding Capacities:
 - a. Basic pipe sizes:
8" SCH 5 through 140
All schedules of 10" through 24" pipe
 - b. Inside diameter mounting range:
7.00" (177.8mm) through 24.25" (616.0mm)
3. Mounting
 - a. Two rows of axially separated jackscrews provide a rigid, secure mount on irregular surfaces.
 - b. Jackscrews are actuated individually for rough centering in elbows.
4. Adjustments:
 - a. Angular offset mechanical adjustment up to 5° in any direction may be made after the miter head is secured to the workpiece.
 - b. Radial offset mechanical adjustment up to 0.19" (4.8mm) may be made after the miter head is secured to the workpiece.

Spare parts and standard tool bits are available from stock. Engineering design services for custom tool bits and special function modifications are available from the factory.

All Tri Tool and allied equipment products are subject to design improvements and specification changes at any time with no obligation to units already sold.

Warranty (limited), parts and/or equipment are warranted against defects in material and workmanship for a period of one year from date of purchase. Full details supplied on request and/or with tools.

Filter, regulator, lubricator required to protect warranty on air powered tools.



<p style="text-align: center;">TRI TOOL INC 3806 SECURITY PARK DRIVE, RANCHO CORDOVA, CA 95742</p>	224B MITER MANDREL HEAD ENVELOPE DRAWING	
	CONTRACT NO. ER-8138	DATE 7/2/99
APPROVALS DRAWN L.LARSON	CHECKED	ISSUED
<p>COMPANY CONFIDENTIAL PROPRIETARY PROPERTY OF TRI TOOL INC. NO REPRODUCTION, USE, OR DUPLICATION OF THE DESIGNS SHOWN HEREON IS PERMITTED WITHOUT EXPRESS WRITTEN CONSENT FROM TRI TOOL INC. 3806 SECURITY PARK DRIVE, RANCHO CORDOVA, CA 95742 COPYRIGHT TRI TOOL INC.</p>		SIZE A SOLID WORKS DWG. NO. 77-1625 REV. SCALE 1/4 CAD MODEL: 224B MM ENV.SLDASM SHEET 1 OF 1