



# TRI TOOL INC.

3041 Sunrise Blvd. • Rancho Cordova, CA 95742-6502 • (888) TRITool • MAIN (916) 288-6100 • FAX (916) 288-6160  
[www.tritool.com](http://www.tritool.com) [customer.service@tritool.com](mailto:customer.service@tritool.com)

TRI TOOL INC.  
TECHNICAL SPECIFICATION  
MODEL 214BE BEVELMASTER® HD (HEAVY DUTY) ELECTRIC 115V AND/OR 230V  
OCTOBER 2010

## Model 214BE BEVELMASTER® HD (Heavy Duty) Electric 115V and/or 230V

The Model 214BE BEVELMASTER® HD Electric is a portable ID mount machine tool for beveling, facing and counterboring 4" through 14" pipe. The tool is configured with an in-line feed knob and electric drive motor at a right angle to the lathe head.

The Model 214BE BEVELMASTER® HD Electric System comes complete with:

▪ Model 214B Sub-Assembly	1 ea.
▪ Tool Holder Assembly (Aluminum)	2 ea.
▪ Tool Holder Assembly (Steel)	1 ea.
▪ Mandrel Assembly	1 ea.
▪ Electric Motor Assembly	1 ea.
▪ Jaw Block Assembly	1 ea.
▪ Wrench Kit	1 set
▪ Operator's Manual	1 ea.

## Design and Operating Features

1. The lathe accepts its own torque through the mandrel.
2. The expanding mandrel provides fast, accurate self-centering and alignment.
3. All tools needed for operation (less tool bits) are provided with the system.
4. The lathe, provided with a convenient handle, is lightweight at less than 87 lbs (39.5 kg) and easily handled by one operator.
5. All 115V motors require a minimum of a 20-amp circuit.

## Specifications

1. Reference Envelope Drawing No.: 77-1728
2. Weight
  - A. 87 lbs (39.5 kg)
3. Clearance and Dimensions
  - A. Maximum Rotating Head DIA.
    - i. 15.35" (389.9 mm)
  - B. Length Over Motor
    - i. 20.50" (509.3 mm)
  - C. Length (Parallel to Axis of Pipe)
    - i. 21.25" (539.8 mm)
  - D. Maximum Width
    - i. 10.60" (269.3 mm)
4. Pipe Cutting Capacities
  - A. Basic Pipe Sizes
    - i. 4" - Schedule 5 through 160
    - ii. 5" through 14" pipe - All Schedules
  - B. Basic Tube Sizes
    - i. Up to 1.32" (33.4 mm) wall tubing with a maximum OD of 14.00" (355.6 mm) and a minimum ID of 3.44" (87.4 mm) may be beveled with standard mandrel.
  - C. Wall Thickness Capacity
    - i. Wall thickness of all standard pipe schedules 1.32" (33.4 mm) maximum in the range listed. Tubing with greater wall thickness may be handled provided the ID is greater than 3.44" (87.4 mm) and the OD is less than 14.00" (355.6 mm). Contact TRI TOOL Inc. for heavier wall procedures.

D. Counterboring Operations

- i. The tool will counterbore pipe and tubing with an ID range of 3.328" (84.6 mm) to 14.00" (355.6 mm).

5. Material Cutting Capabilities

- A. Mild steels, chrome steels (Rc 35 max.), stainless steel, copper-nickel alloys and aluminum without limitations except size and wall thickness as specified.
- B. Inconel and some other high temperature alloys may require special procedures as a function of wall thickness and type of end preparation. Contact TRI TOOL Inc. Engineering Department for details.

6. Drive System

A. Gear Driven

B. Electric Motor

- i. Free Speed
  - a. 150 rpm
- ii. Maximum HP Speed
  - a. 100 rpm

C. Pneumatic Motor Drive and Hydraulic Motor Drive are also available.

7. Power Supply

- A. 115 VAC, 40 – 60 Hz, 2300 Watt Rated Supply
- B. 230 VAC, 40 – 60 Hz, 2300 Watt Rated Supply

8. Cutting Speeds

A. Maximum Cutting Head Speed

- i. 9 rpm

B. Cutting Head Speed at Maximum HP

- i. 6 rpm

C. Functional Speed Range

- i. 4 – 9 rpm

- D. RPM at 200 Surface Inches per Minute
  - i. 14.00" (355.6 mm) DIA
    - a. 5 rpm
  - ii. 4.00" (101.6 mm) DIA
    - a. 16 rpm
- 9. Speed Control
  - A. Trigger with lock and adjustable speed dial
- 10. Mounting
  - A. Manually actuated draw rod expands mandrel ramps and jaw blocks.
- 11. Feed
  - A. Manual-Feed handle is in line at the back of the machine. Feed rate is .083" (2.1 mm) per revolution of the feed handle.
  - B. Maximum available feed travel is 2.00" (50.8 mm).

Accessories (Optional)

- 1. Flange Facer Kit
- 2. Elbow Mandrel Kit
- 3. Elbow Mandrel Pointer Kit
- 4. Dial Indicator Kit
- 5. Miter Mandrel Kit
- 6. Sleeve Mandrel Kit
- 7. ID Tracking Module Kit

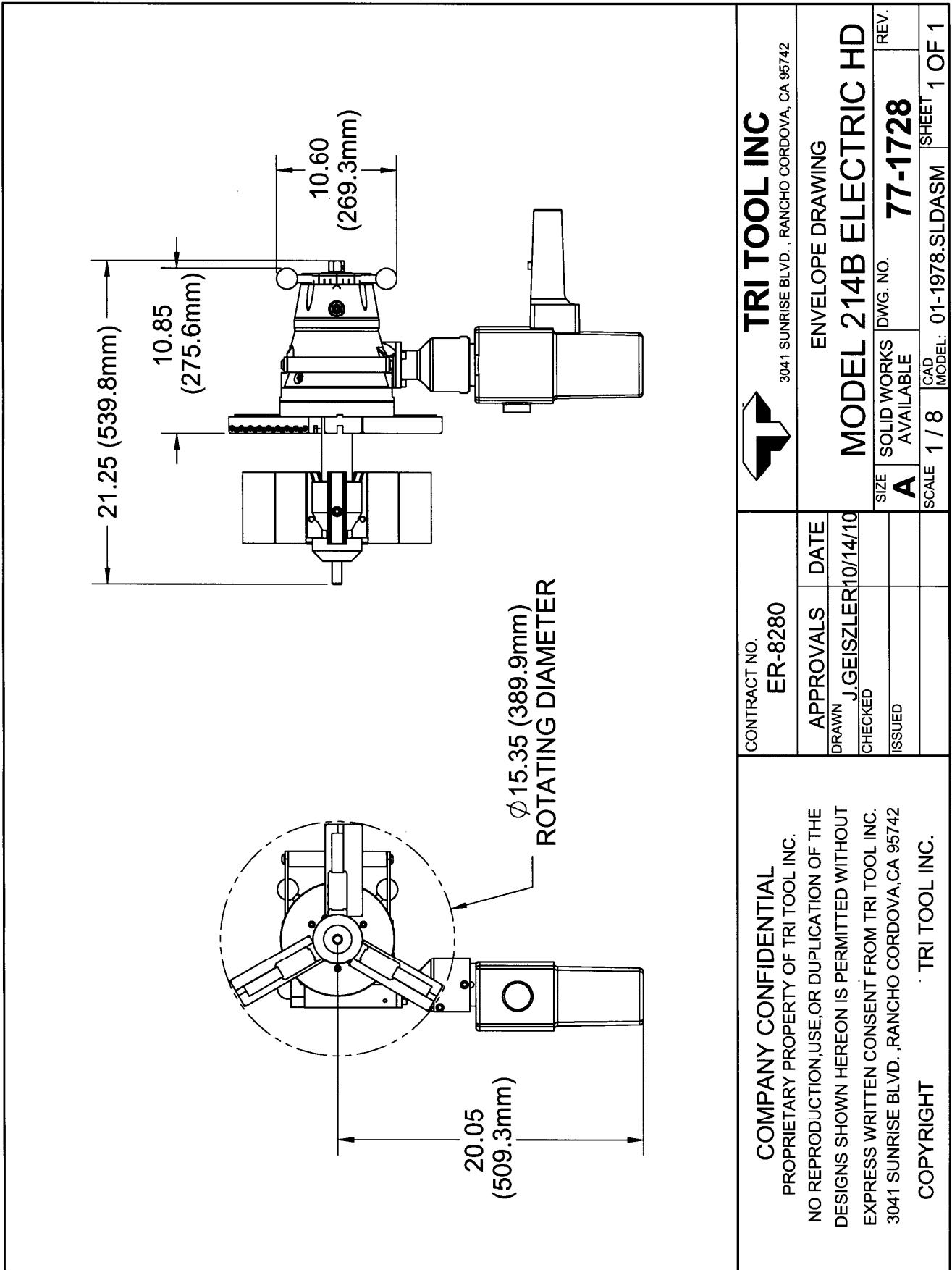
### Note To The Customer

Spare Parts and Standard Tool Bits are available from stock. Engineering design services for custom tool bits and special function modifications are available from the factory.

All Tri Tool and allied equipment products are subject to design improvements and specification changes at any time with no obligation to units already sold.

Warranty (limited): Parts and equipment are warranted against defects in material and workmanship for a period of one (1) year from date of purchase. Full details supplied on request and/or with the tools.

Filter, regulator and lubricator are required to protect the warranty on air powered tools.



CONTRACT NO. <b>ER-8280</b>	
APPROVALS	DATE
DRAWN <b>J. GEISZLER</b>	10/14/10
CHECKED	
ISSUED	

**COMPANY CONFIDENTIAL**  
 PROPRIETARY PROPERTY OF TRI TOOL INC.  
 NO REPRODUCTION, USE, OR DUPLICATION OF THE  
 DESIGNS SHOWN HEREON IS PERMITTED WITHOUT  
 EXPRESS WRITTEN CONSENT FROM TRI TOOL INC.  
 3041 SUNRISE BLVD., RANCHO CORDOVA, CA 95742  
 COPYRIGHT TRI TOOL INC.

<b>TRI TOOL INC</b> 3041 SUNRISE BLVD., RANCHO CORDOVA, CA 95742	
ENVELOPE DRAWING	
<b>MODEL 214B ELECTRIC HD</b>	
SIZE <b>A</b>	SOLID WORKS DWG. NO. <b>77-1728</b>
SCALE <b>1 / 8</b>	CAD MODEL: <b>01-1978.SLDASM</b>
SHEET <b>1 OF 1</b>	