



# TRI TOOL INC.

3041 Sunrise Blvd. • Rancho Cordova, CA 95742-6502 • (888) TRITool • MAIN (916) 288-6100 • FAX (916) 288-6160  
[www.tritool.com](http://www.tritool.com) [customer.service@tritool.com](mailto:customer.service@tritool.com)

TRI TOOL INC.  
TECHNICAL SPECIFICATION  
MODEL 214B BEVELMASTER<sup>®</sup> FF (FLANGE FACER) KIT  
OCTOBER 2010

## Model 214B BEVELMASTER<sup>®</sup> FF (Flange Facer) Kit

The Model 214B BEVELMASTER<sup>®</sup> FF is supplied as a kit to provide a Model 214B BEVELMASTER<sup>®</sup> with flange facing capabilities over a cutting range of 3.44" (87.4 mm) to 24.00" (609.6 mm) diameters. The kit allows a quick, easy field conversion of the Model 214B from a beveling configuration to a flange facer configuration and back again as required.

The Model 214B BEVELMASTER<sup>®</sup> Flange Facer Kit comes complete with:

- |                                    |       |
|------------------------------------|-------|
| ▪ Flange Facer Assembly, 214B      | 1 ea. |
| ▪ Tripper Block Assemblies         | 1 ea. |
| ▪ Tool Bit, Outside, Record Finish | 1 ea. |
| ▪ Tool Bit, Outside, Smooth Finish | 1 ea. |
| ▪ Carrying Case                    | 1 ea. |
| ▪ Operator's Manual                | 1 ea. |
| ▪ Wrench Kit                       | 1 set |

## Design and Operation Features

1. Radial feed can be either .013" (.33 mm) with one tripper pin or .026" (.66 mm) with two tripper pins per revolution with standard lead screw.
2. Axial position adjustment is provided with the Model 214B mandrel system and then locked to prevent movement during the facing operation.
3. The standard 214B mandrel provides mounting from 3.31" (84.1 mm) to 14.08" (357.6 mm) inside diameter range. Short perch length mandrels are available as an optional accessory.

## Specifications

1. Reference Envelope Drawing No.: 77-1719
2. Weight
  - A. 20 lbs (9.07 kg)
3. Clearance and Dimensions
  - A. Maximum Rotating DIA
    - i. 26.00" (660.4 mm)
  - B. Max Width
    - i. 10.60" (269.3 mm)
4. Cutting Capacity
  - A. Maximum chip width
    - i. .020" (.51 mm)
5. Range
  - A. 3.44" (87.4 mm) to 24.00" (609.6 mm) dia.
6. Feed Travel (Automatic Radial)
  - A. 9.50" (241.3 mm)
7. Feed Rate
  - A. .013" (.330 mm) or .026" (.66 mm) per rev.
8. Material Cutting Capability
  - A. Mild steels, chrome steels (Rc 35 max.), stainless steel, copper-nickel alloys and aluminum.

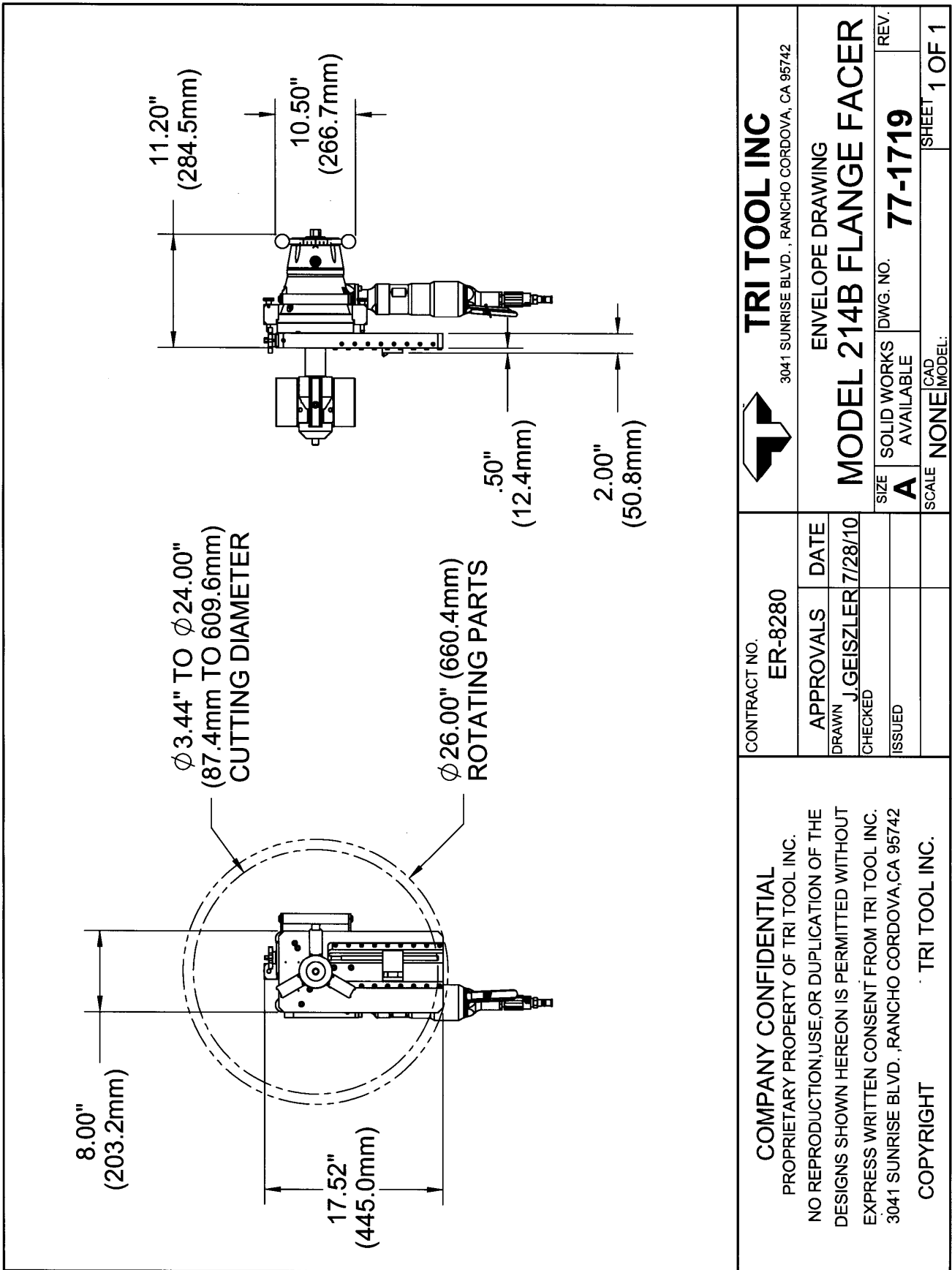
Note To The Customer


Spare Parts and Standard Tool Bits are available from stock. Engineering design services for custom tool bits and special function modifications are available from the factory.

All Tri Tool Inc. and allied equipment products are subject to design improvements and specification changes at any time with no obligation to units already sold.

Warranty (limited): Parts and equipment are warranted against defects in material and workmanship for a period of one (1) year from date of purchase. Full details supplied on request and/or with the tools.

Filter, regulator and lubricator are required to protect the warranty on air powered tools.



 <b>TRI TOOL INC</b> 3041 SUNRISE BLVD., RANCHO CORDOVA, CA 95742		ENVELOPE DRAWING <b>MODEL 214B FLANGE FACER</b>		REV.
		SIZE <b>A</b>	SOLID WORKS AVAILABLE	DWG. NO. <b>77-1719</b>
CONTRACT NO. <b>ER-8280</b>		APPROVALS	DATE	SCALE <b>NONE</b>
COMPANY CONFIDENTIAL PROPRIETARY PROPERTY OF TRI TOOL INC. NO REPRODUCTION, USE, OR DUPLICATION OF THE DESIGNS SHOWN HEREON IS PERMITTED WITHOUT EXPRESS WRITTEN CONSENT FROM TRI TOOL INC. 3041 SUNRISE BLVD., RANCHO CORDOVA, CA 95742 COPYRIGHT TRI TOOL INC.		DRAWN <b>J. GEISZLER</b>	7/28/10	CAD MODEL:
		CHECKED		
		ISSUED		