



TRI TOOL INC.

3041 Sunrise Blvd. • Rancho Cordova, CA 95742-6502 • (888) TRITool • MAIN (916) 288-6100 • FAX (916) 288-6160
www.tritool.com customer.service@tritool.com

TRI TOOL INC.
TECHNICAL SPECIFICATION
MODEL 208B BEVELMASTER® ID TRACKING MODULE KIT
SEPTEMBER 2010

Model 208B BEVELMASTER® ID Tracking Module Kit

The Model 208B BEVELMASTER® ID Tracking Module Kit is an optional accessory that increases the versatility of the Model 208B BEVELMASTER®. The ID Tracking Module is designed to track out of round pipe/tube where control of the land thickness is critical on the wall pipe/tube.

The Model 208B BEVELMASTER® ID Tracking Module Kit comes complete with:

- | | |
|------------------------------------|-------|
| ▪ ID Tracking Module Assembly | 1 ea. |
| ▪ Mandrel Assembly | 1 ea. |
| ▪ Carrying Case | 1 ea. |
| ▪ Operator's Manual | 1 ea. |
| ▪ All required operator's wrenches | 1 set |

Design and Operating Features

1. Easy to assemble unit bolts directly to the Model 208B in lieu of the standard tool modules.
2. .88" (24.4 mm) of radial tool holder spring travel accommodates pipes that are out of round.
3. The tool holder has two tool bit slots to allow facing and beveling simultaneously.

Specifications

1. Reference Envelope Drawing No.: 77-1716
2. Cutting Capacities
 - A. Basic Pipe Sizes
 - i. 4" - Schedules 5 through 40
 - ii. 5" and 8" - All schedules
 - B. Wall Thickness Capacity
 - a. No minimum wall thickness limitations to .750" (19.1 mm) maximum.
 - C. Minimum I.D. Mounting Diameter
 - i. 4.00" (101.6 mm)
3. Material Cutting Capabilities
 - A. Mild steels, chrome steels (Rc 35 max.), stainless steel, copper-nickel and aluminum without limitations other than size and wall thickness as specified.
 - B. Inconel and some other high-temperature alloys may require special procedures as a function of wall thickness and type of end preparation. Contact TRI TOOL's Engineering Department for details.

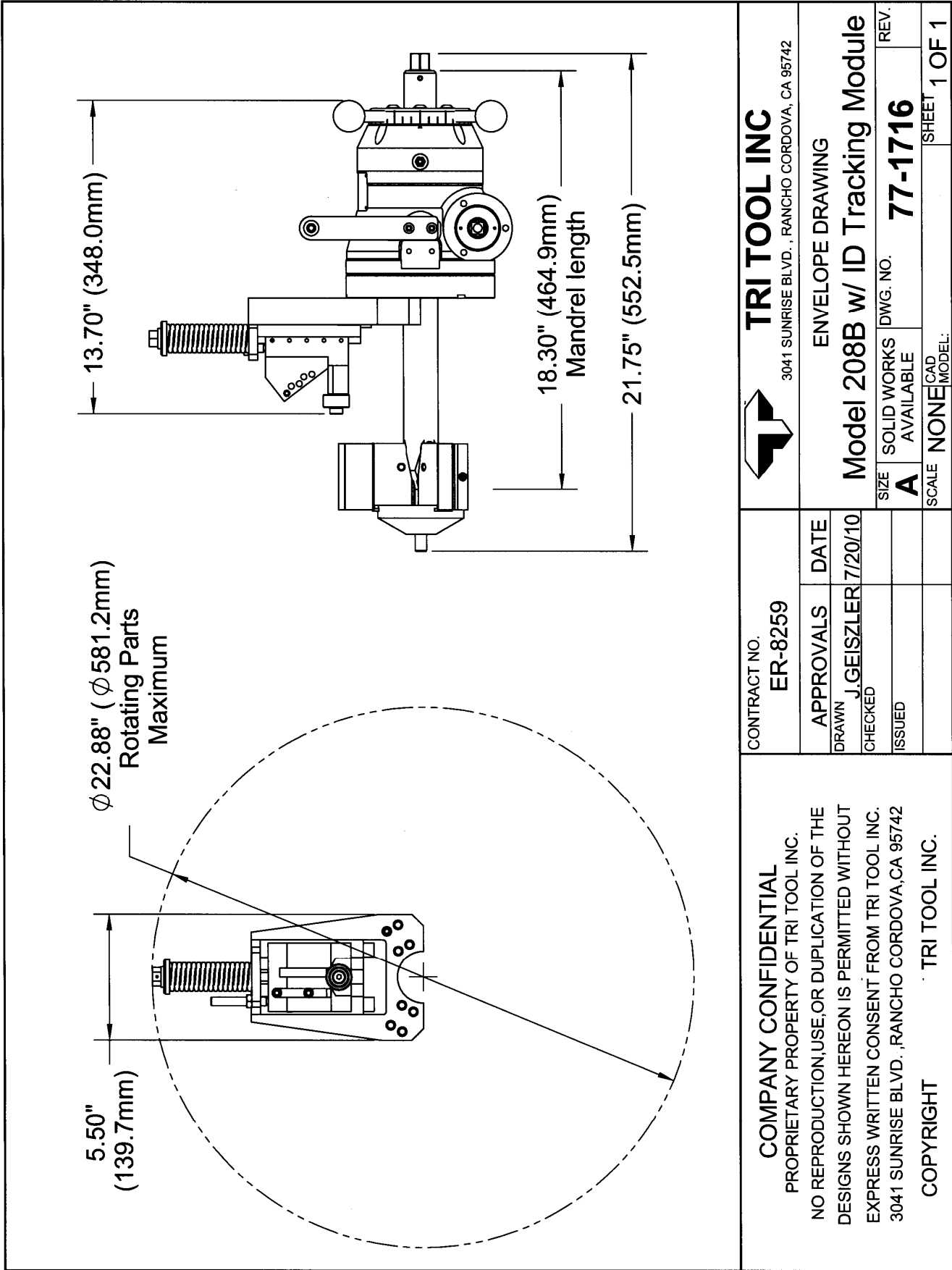
Note To The Customer

Spare Parts and Standard Tool Bits are available from stock. Engineering design services for custom tool bits and special function modifications are available from the factory.

All Tri Tool Inc. and allied equipment products are subject to design improvements and specification changes at any time with no obligation to units already sold.

Warranty (limited): Parts and equipment are warranted against defects in material and workmanship for a period of one (1) year from date of purchase. Full details supplied on request and/or with the tools.

Filter, regulator and lubricator are required to protect the warranty on air powered tools.



<p>TRI TOOL INC 3041 SUNRISE BLVD., RANCHO CORDOVA, CA 95742</p>		<p>ENVELOPE DRAWING</p>	
<p>CONTRACT NO. ER-8259</p>		<p>Model 208B w/ ID Tracking Module</p>	
<p>APPROVALS</p>	<p>DATE</p>	<p>SIZE A</p>	<p>REV. 77-1716</p>
<p>DRAWN J. GEISZLER</p>	<p>7/20/10</p>	<p>SOLID WORKS AVAILABLE</p>	<p>DWG. NO.</p>
<p>CHECKED</p>	<p>ISSUED</p>	<p>SCALE NONE</p>	<p>CAD MODEL:</p>
<p>COMPANY CONFIDENTIAL PROPRIETARY PROPERTY OF TRI TOOL INC. NO REPRODUCTION, USE, OR DUPLICATION OF THE DESIGNS SHOWN HEREON IS PERMITTED WITHOUT EXPRESS WRITTEN CONSENT FROM TRI TOOL INC. 3041 SUNRISE BLVD., RANCHO CORDOVA, CA 95742</p>		<p>SHEET</p>	<p>1 OF 1</p>
<p>COPYRIGHT TRI TOOL INC.</p>			