



TRI TOOL INC.

3041 Sunrise Blvd. • Rancho Cordova, CA 95742-6502 • (888) TRITool • MAIN (916) 288-6100 • FAX (916) 288-6160
www.tritool.com customer.service@tritool.com

TRI TOOL INC.
TECHNICAL SPECIFICATION
MODEL 208B BEVELMASTER® FF (FLANGE FACER) KIT
JULY 2010

Model 208B BEVELMASTER® FF (Flange Facer) Kit

The Model 208B BEVELMASTER® FF is supplied as a kit to provide the Model 208B BEVELMASTER® with flange facing capabilities over a cutting range of 1.75" (44.5 mm) to 16.50" (419.1 mm) diameters. The Kit allows quick, easy field conversion of the 208B from a beveling configuration to a flange facer configuration and back again as required.

The Model 208B BEVELMASTER® FF Kit (P/N 05-0604) comes complete with:

- | | |
|--|-------|
| ▪ 208B Flange Facer Assembly (P/N 82-0220) | 1 ea. |
| ▪ Tripper Block Assembly (P/N 48-0478) | 2 ea. |
| ▪ Carrying Case | 1 ea. |
| ▪ All required operator's wrenches | 1 set |
| ▪ Start-up tooling package | 1 ea. |
| ▪ Operator's Manual | 1 ea. |

Design and Operating Features

1. Radial feed can be either .013" or .026" per revolution with standard lead screw.
2. Axial position adjustment is provided with the 208B mandrel system and then locked to prevent movement during the facing operation.
3. Radial feed travel is 7.90".
4. The standard 208B mandrels provide mounting from 1.63" to 8.63" inside diameter range. Short perch length mandrels are available as an optional accessory.

Specifications

1. Reference Envelope Drawing No.: 77-1714
 2. Range
 - a. 1.75" (44.5 mm) to 16.50" (419.1 mm) diameter
 3. Auto Feed Travel
 - a. 7.90" (200.7 mm)
 4. Feed Rate
 - a. .013" or .026" per revolution
 5. Maximum chip width
 - a. .020" (.51 mm)
-
1. Materials
 - a. Most stainless steels, carbon steels, inconels, etc., provided the Rockwell hardness is less than Rc 35.
 2. Clearances and Dimensions
 - a. See attached envelope drawing.

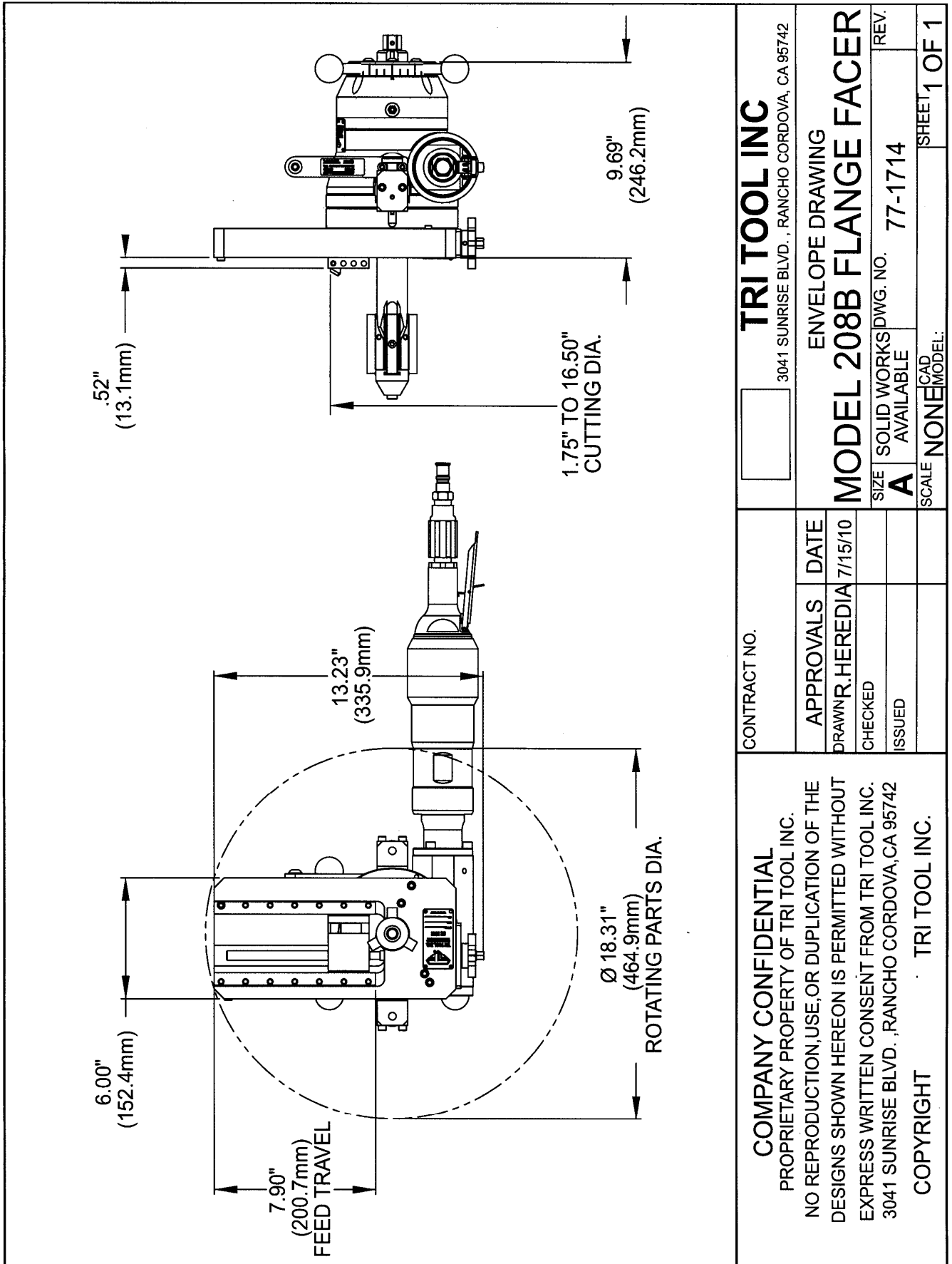
Note To The Customer

Spare Parts and Standard Tool Bits are available from stock. Engineering design services for custom tool bits and special function modifications are available from the factory.

All Tri Tool Inc. and allied equipment products are subject to design improvements and specification changes at any time with no obligation to units already sold.

Warranty (limited): Parts and equipment are warranted against defects in material and workmanship for a period of one (1) year from date of purchase. Full details supplied on request and/or with the tools.

Filter, regulator and lubricator are required to protect the warranty on air powered tools.



<p>TRI TOOL INC 3041 SUNRISE BLVD., RANCHO CORDOVA, CA 95742</p>		<p>ENVELOPE DRAWING</p>	
		<p>MODEL 208B FLANGE FACER</p>	
<p>CONTRACT NO.</p>	<p>APPROVALS</p>	<p>DATE</p>	<p>REV.</p>
<p>NO REPRODUCTION, USE, OR DUPLICATION OF THE DESIGNS SHOWN HEREON IS PERMITTED WITHOUT EXPRESS WRITTEN CONSENT FROM TRI TOOL INC. 3041 SUNRISE BLVD., RANCHO CORDOVA, CA 95742</p>	<p>DRAWN: R. HEREDIA</p>	<p>7/15/10</p>	<p>REV.</p>
<p>COPYRIGHT TRI TOOL INC.</p>	<p>CHECKED</p>	<p>ISSUED</p>	<p>SIZE A</p>
<p>COPYRIGHT TRI TOOL INC.</p>	<p>SCALE NONE</p>	<p>MODEL: CAD</p>	<p>DWG. NO. 77-1714</p>
<p>COPYRIGHT TRI TOOL INC.</p>	<p>SHEET 1 OF 1</p>	<p>MODEL: CAD</p>	<p>SCALE NONE</p>